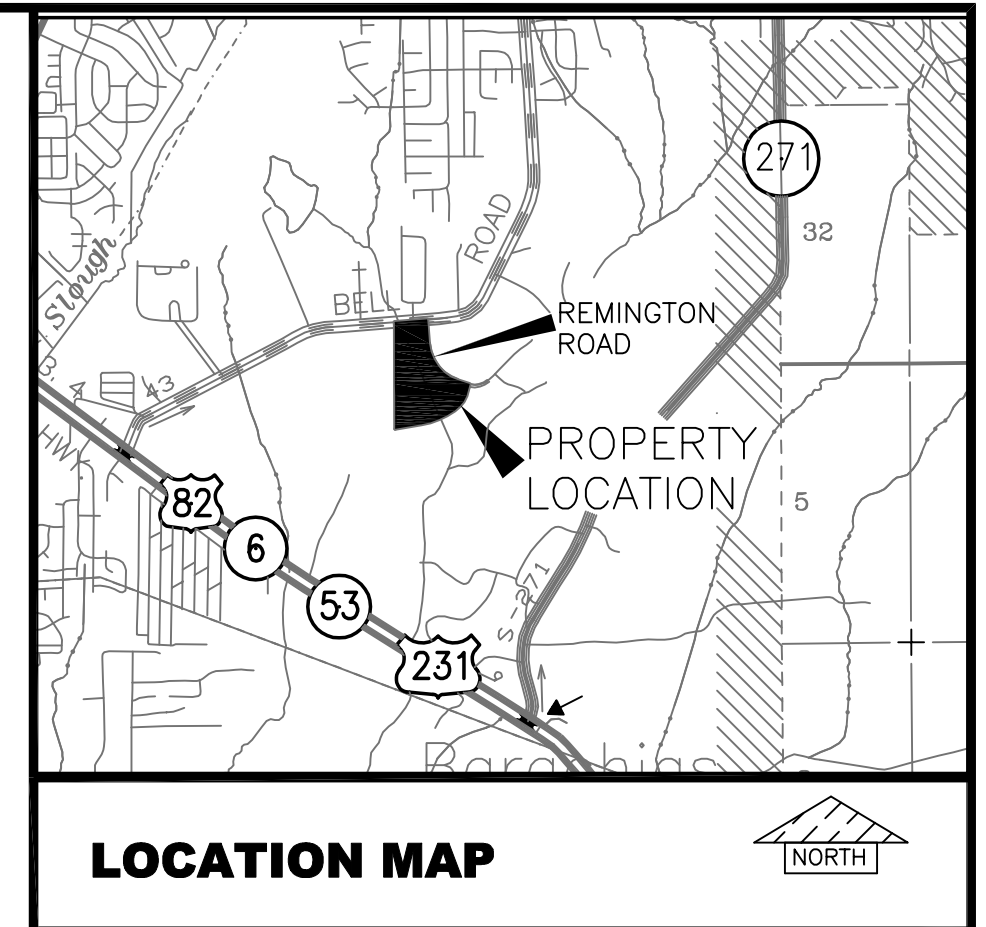
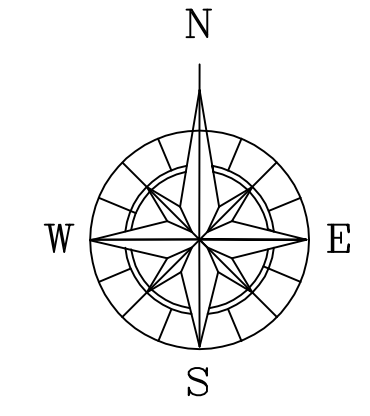


SALES MAP

JUNE M. COLLIER FLETCHER ESTATE MONTGOMERY, ALABAMA



* NOTE: BEARINGS ROTATED TO MATCH BELLWOOD ESTATES PLAT NO. 5, AS RECORDED IN PB-26, PG. 46, MONTGOMERY, ALABAMA



- LEGEND:**
- FOUND IRON PIN
 - △ CALCULATED POINT
 - SET IRON PIN (5/8" REBAR CAPPED) W/# CA-00017-LS

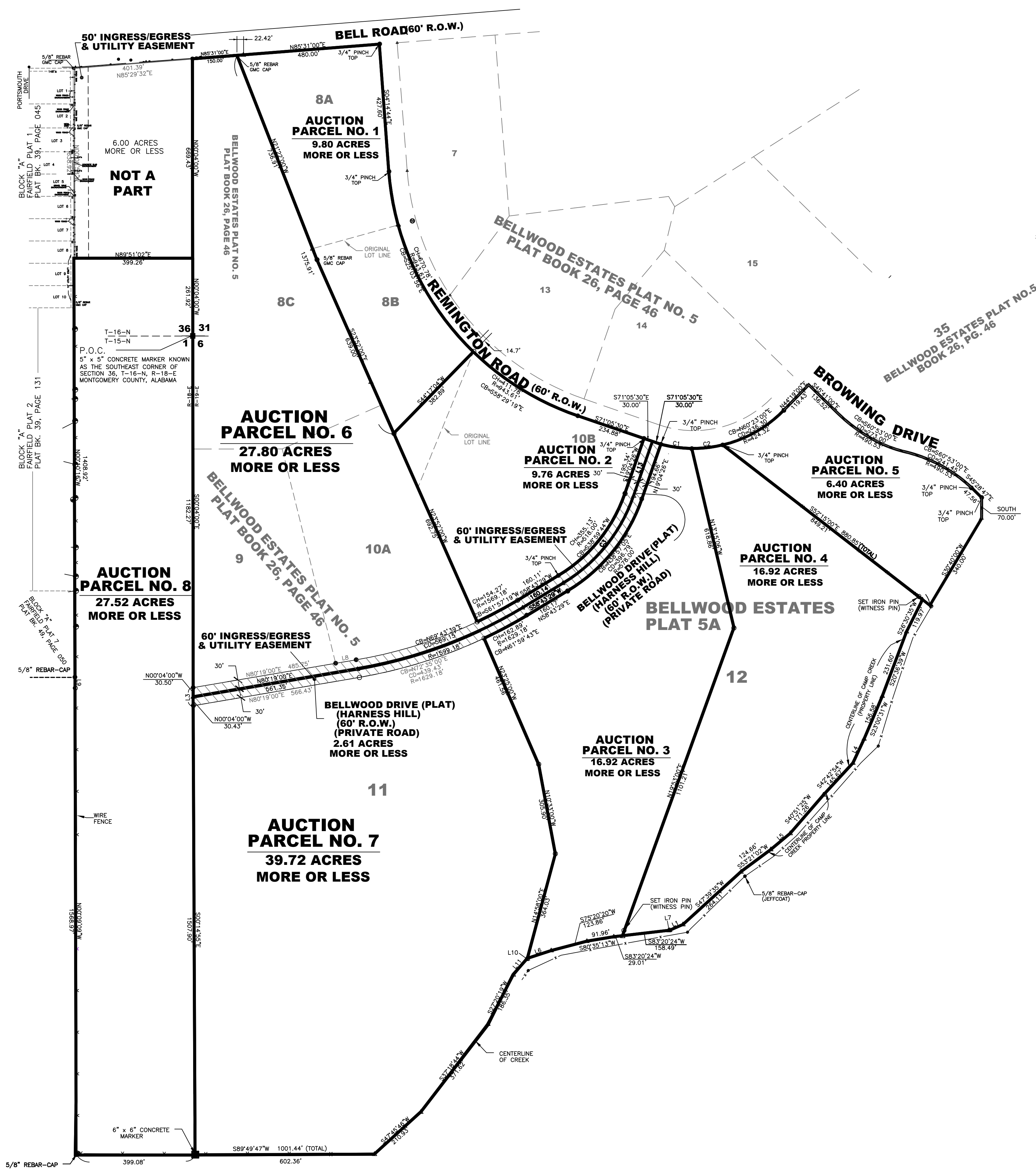
ACREAGE OF OVERALL - 145.83 acres, more or less (AUCTION PARCELS NO. 1-8)

ACREAGE OF HARNESS HILL R.O.W. (PRIVATE ROAD) - 2.61 acres, more or less

NOTE: THIS IS NOT A FINAL SURVEY

LINE	BEARING	DISTANCE
L1	S86°39'31"W	48.43'
L3	S00°04'30"E	60.33'
L4	S24°49'58"W	89.02'
L5	S50°15'54"W	84.60'
L6	S71°47'58"W	84.36'
L7	S83°20'24"W	1.92'
L8	S80°31'11"W	70.00'
L9	N00°03'09"W	35.28'
L10	S89°04'41"W	3.71'
L11	S39°50'22"W	68.35'
L12	S22°50'17"E	60.05'
L13	N19°04'26"E	194.62'

CURVE	CHORD BEARING	CHORD DISTANCE	RADIUS
C1	S82°17'10"E	104.77'	426.40'
C2	N83°38'01"E	104.77'	426.40'
C3	N38°57'10"E	376.31'	848.00'



DATE: 4/4/2016

LARRY E. SPEAKS & ASSOCIATES
CONSULTING ENGINEERS & LAND SURVEYORS
535 HERRON STREET
MONTGOMERY, AL 36104
TEL - 334/262-1091

ACAD: 7/14/17/77470VERALL.DWG